

AV-282 Cast Carbon Steel Accessible Feed Check Valve, Flanged Ends

Features

Body Material Cum Standard	Cast Carbon Steel (ASTM A216 Gr. WCB)
Product Description	Bolted Bonnet, Outside Screw & Yoke Type, Rising Stem with Backseat Arrangement, Handwheel Operated
Type of Seat	Renewable Seat
Type of Disc	Renewable Disc
Trim	13% Cr. (SS 410) + Stellite Facing
End Details	Flanged Ends as per BS-10 Table-J Flat Face (Undrilled)
Test Pressure	Body: 700 Psig (Hyd.)
Max. Working Pressure	350 Psig (Steam)
Max. Working Temperature	400°C

Notes

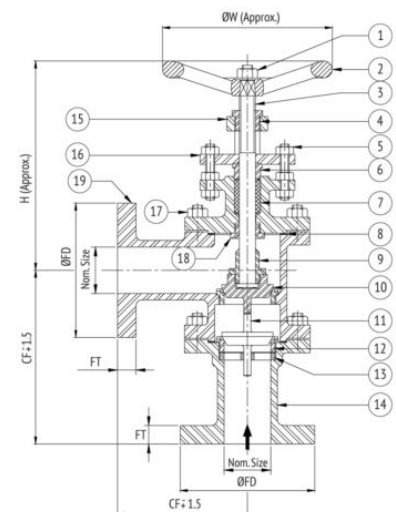
Test Certificate in Form III-C as per IBR is furnished with every supply.

Suitability

Water, Steam

Material Combination

S.No	Description	No.	Material
1	Nut	1	Carbon Steel
2	Handwheel	1	C.I. / M.I.
4	Yoke Bush	1	Stainless Steel
5	Gland Studs & Nuts	2 & 6	Carbon Steel
6, 3	Gland Follower, Stem	1	Stainless Steel
7	Gland Packing	-	Graphited Asbestos
8	Gasket	2	C.A.F.
9	Disc Nut	1	Stainless Steel
10, 11	Disc, Check Valve Disc	1	Stainless Steel
12	Body Seat Ring	2	Stainless Steel
13	Disc Guide	1	Bronze
14	Inlet Body	1	C.C.S.
15, 16	Bonnet, Gland Flange	1	C.C.S.
17	Studs & Nuts	To Suit	Carbon Steel
18	Back Seat Bush	1	Stainless Steel
19	Body	1	C.C.S.



Dimensional Data

Size (mm)	CF	CF1	H	ØW	ØFD	FT
25	127	165	225	160	120.7	19.1
40	140	190	235	200	139.7	22.3
50	152	215	255	200	165.1	25.4
65	178	240	285	250	184.2	25.4
80	203	265	315	250	203.2	31.8