

## AV-269 Cast Iron Ball Float Steam Trap, Screwed Ends

### Features

Body Material Cum Standard	Cast Iron (IBR 86 to 93 Gr. A)
Product Description	Horizontal Type
Trim	Stainless Steel (AISI 304)
End Details	Screwed Female BSP Parallel Threads (BS-21)
Test Pressure	Body: 300 Psig (Hyd.)
Max. Working Pressure	150 Psig (Steam)
Max. Working Temperature	220°C

### Notes

Test Certificate in Form III-C as per IBR is furnished with every supply.

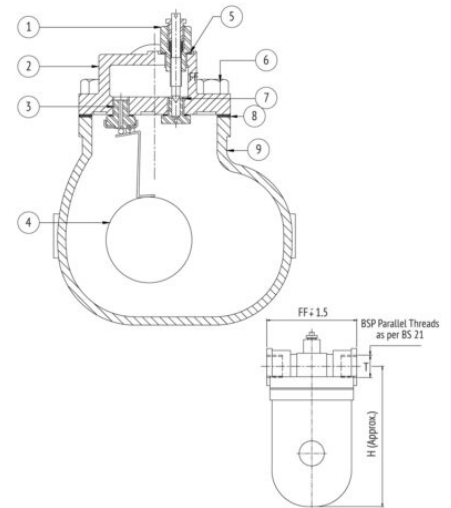
### Suitability

Water, Steam, Oil



### Material Combination

S.No	Description	No.	Material
1	SLR Assembly	1	Stainless Steel
2	Cover	1	Cast Iron
3	Seat Assembly	1	Stainless Steel
4	Ball Float	1	Stainless Steel
5	Washer	1	Copper
6	Bolts & Nuts	4 Each	Carbon Steel
7	Nipple	1	Stainless Steel
8	Gasket	1	C.A.F.
9	Body	1	Cast Iron



### Dimensional Data

Size (mm)	FF	H	T
15	131	157	1/2"
20	131	162	3/4"
25	133	200	1"
40	272	250	1.1/2"
50	301	272	2"