

AV-86 Bronze Foot Valve (Screwed Ends) PN 20

Features

Vertical Lift, Rubber Seat with Metallic Strainer, Integral Seat, Cu-Alloy Trim Screwed Female NPT Threads as per BS 21

Test Pressure

Body : 435 Psig (Hyd.)
Seat : 320 Psig (Hyd.)

Testing Standard

BS EN 12266 Part-1

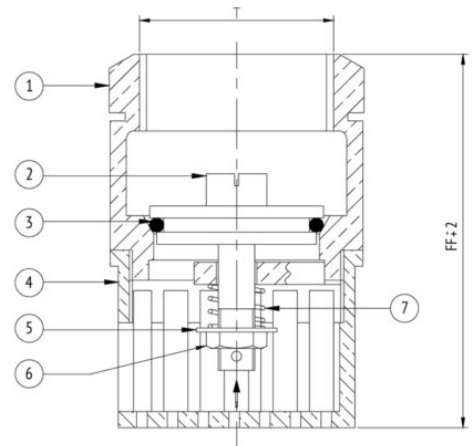
Suitability

Water



Material Combination

P.No.	Name of Part	Material	Specification
1	Body	Bronze	BS 1400 LG2
2	Disc	Bronze	BS 1400 LG2
3	O - Ring	Synthetic Rubber	-
4	Stainer	Bronze	BS 1400 LG2
5	Washer	Brass	-
6	Lock Nut	Brass	-
7	Spring	Stainless Steel	AISI 304



Dimensional Data

Nominal Size (mm)	FF	T
15	68	1/2"
20	68	3/4"
25	73	1"
32	83	1.1/4"
40	88	1.1/2"
50	92	2"
65	108	2.1/2"
80	114	3"
100	137	4"
125	160	5"
150	199	6"