

## IC-76 Investment Casting Stainless Steel (CF8) Swing Check Valve, Screwed Ends, PN-16



### Features

Pressure / Class Rating	PN-16
Body Material Cum Standard	Cast Stainless Steel (ASTM A351 Gr. CF8)
Product Description	Screwed in Cover
Type of Seat	Integral Seat
Trim	Stainless Steel (Type 304)
End Details	Screwed Female BSP Parallel Threads (BS-21)
Test Pressure	Body: 350 Psig (Hyd.), Seat: 255 Psig (Hyd.)
Application Medium	Food Processing

### Notes

Also available in CF8M (SS 316)  
Other screwed end specifications can be provided on request.

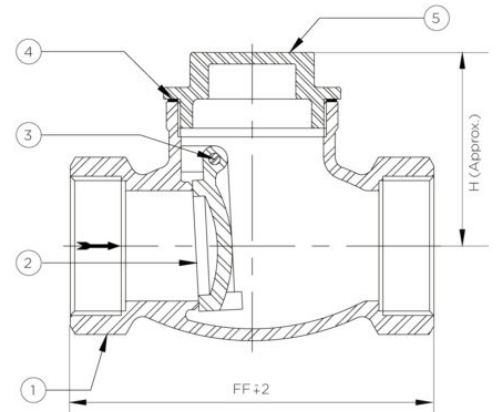
### Suitability

Water, Steam, Oil



### Material Combination

S.No	Description	No.	Material
1	Body	1	Cast Stainless Steel
2	Disc	1	Cast Stainless Steel
3	Hinge Pin	1	Stainless Steel
4	Gasket	1	PTFE
5	Cover	1	Cast Stainless Steel
6	Side Plug	1	Cast Stainless Steel



### Dimensional Data

Size (mm)	Size (inches)	FF	H
15	1/2"	65	-
20	3/4"	78	-
25	1"	95	55
32	1.1/4"	115	60
40	1.1/2"	125	70
50	2"	138	85