

## FV-506 Gun Metal Ball Valve with Strainer Screwed Ends, PN-20

### Features

Full Bore, Two Piece Design, Renewable Seat, SS Trim, Mix End  
Inlet Screwed Female & Outlet Screwed Male BSP Parallel Threads (BS-21)

### Test Pressure

Body - 500 Psi g (Hyd.)  
Seat - 250 Psi g (Hyd.) 100 Psi g (Air)

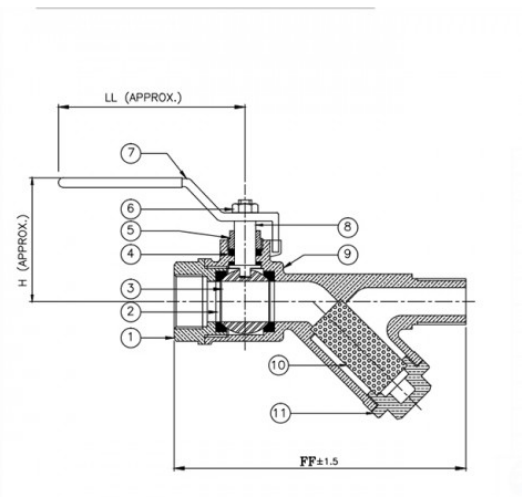
### Suitability

Water, Steam, Oil, Air



### Material Combination

P.No.	Name of Part	Material	Specification
1	Body Connector	Gun Metal	BSEN 1982 Gr. CC 491K
2	Seat	PTFE	
3	Ball	Stainless Steel	AISI 304
4	Gland Packing Ring	PTFE	-
5	Gland	Gun Metal	BSEN 1982 Gr. CC 491K
6	Lever Nut	Brass / Carbon Steel	-
7	Lever	Steel	With PVC Sleeve
8	Stem	Stainless Steel	AISI 304
9	Body	Gun Metal	BSEN 1982 Gr. CC 491K
10	Screen	Stainless Steel	Type 304
11	Plug	Gun Metal	BSEN 1982 Gr. CC 491K



### Dimensional Data

Nominal Size (mm)	T	FF ±1.5	H	LL
15	1/2"	131	60	94
20	3/4"	144	67	130
25	1"	194	72	137
32	1 1/4"	198	72	152
40	1 1/2"	214	87	170
50	2"	248	105	195