

## IC-31 Test & Drain C.S.S. Ball Valve for Sprinkler System

### Features

Rated Pressure 300 PSI  
End Connection Screwed Female BSP Parallel Threads as per BS 21

· Test & Drain Ball Valve for Sprinkler System combines the function of test and drain for wet sprinkler system. □ Single handle ball valve with three working position consist of OFF, TEST & DRAIN for wet sprinkler systems · Tamper resistant test orifice with sight glass feature □ Lever operated, blow out proof system □ Orifice Sizes : 5.6K /8K (other sizes available on request) □ Max. Working Pressure : 300Psig (Hyd.) □ Test Pressure □- Body : 450 Psig (Hyd.); Seat : 330 Psig (Hyd.)

Note : Other Screwed ends shall be provided on request

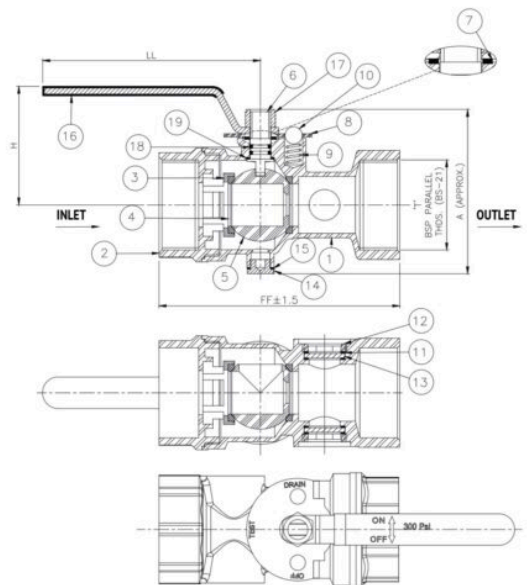
### Suitability

Water



### Material Combination

S.No	Description	No.	Material	Specifications
1	Body	1	C.S.S.	ASTM A351 Gr. CF8
2	Connector	1	C.S.S.	ASTM A351 Gr. CF8
3	Spacer	1	C.S.S.	ASTM A351 Gr. CF8
4	Seat Ring	2	PTFE	-
5	Ball	1	C.S.S.	ASTM A351 Gr. CF8
6	Stem	1	S.S.	ASTM A276 Type 304
7	Plate Seal Ring	1	PTFE	-
8	Direction Locking Plate	1	S.S.	202 Sheet
9	Spring	1	S.S.	AISI 304
10	Locking Ball	1	S.S.	Polished
11	Glass Seal Ring	4	PTFE	-
12	Gland	2	S.S.	AISI 304
13	Transparent Glass	2	Acrylic	-
14	Drain Plug	1	S.S.	ASTM A276 Type 304
15	Plug Seal Ring	1	PTFE	-
16	Lever	1	S.S.	202 Sheet (with PVC Grip)
17	Nyloc Nut	1	S.S.	AISI 304
18	O-Ring	2	EPDM	-
19	Stem Seal	1	PTFE	-



### Dimensional Data

Size (mm)	FF	A	H	LL	T
25	128.5	106	72	137	1"
32	128.5	106	72	137	1.1/4"
40	152	106	76	137	1.1/2"
50	152	106	76	137	2"