

FV-508 C.S.S. Investment Casting Ball Valve

Features

Two Piece Design, Full Bore, Renewable Seat, SS 316 Trim
Screwed Female Ends to BSP/BSPT/NPT/Socket welded ends to ASME B16.11

Test Pressure

Seat - 700 Psi g (Hyd.)
Seat - 150 Psi g (Steam)

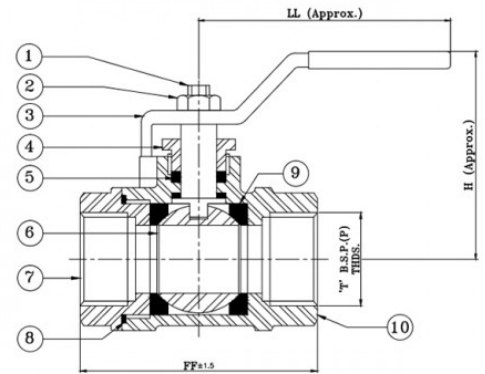
Suitability

Water, Steam, Gas, Oil, Air



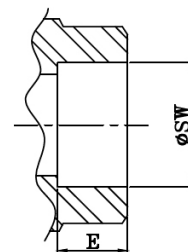
Material Combination

P.No.	Name of Part	Material	Specification
1	Stem	Stainless Steel	AISI 316
2	Locking Nut	Stainless Steel	AISI 316
3	Lever	Stainless Steel Sheet	PVC COATED
4	Gland	Stainless Steel	AISI 316
5	Packing Ring	PTFE	-
6	Ball	C.S.S	ASTM A351 Gr. CF8M
7	Body Connector	C.S.S	ASTM A351 Gr. CF8M
8	Gasket	PTFE	-
9	Seat	PTFE	-
10	Body	C.S.S	ASTM A351 Gr. CF8M



Dimensional Data

Nominal Size (mm)	FF ±1.5	H	LL	T	ØSW	E (Min.)
8	60	50	100	1/4"	14.6/14.2	9.5
10	60	50	100	3/8"	18.0/17.6	9.5
15	62	50	125	1/2"	22.2/21.8	9.5
20	75	60	115	3/4"	27.6/27.6	12.5
25	85	60	135	1"	34.3/33.9	12.5
32	95	75	170	1.1/4"	43.1/42.7	12.5
40	105	95	220	1.1/2"	49.2/48.8	12.5
50	125	100	260	2"	61.7/61.2	16.0



**SOCKET WELDED ENDS.
AS PER ASME B16.11**