

## FV-509 C.S.S. Investment Casting Ball Valve, Class-150

### Features

Two Piece Design, Full Bore, Lever Operated (Blow Out Proof Stem), Renewable Seat, SS Trim  
Flanges as per ANSI B16.5 Class-150 (Drilled)  
Product Specification : BS-17292/ API-6D

### Test Pressure

Body - 30 Bar (Hyd.)  
Seat - 22 Bar (Hyd.)  
Testing Standard : API-598/ BSEN-12266-1

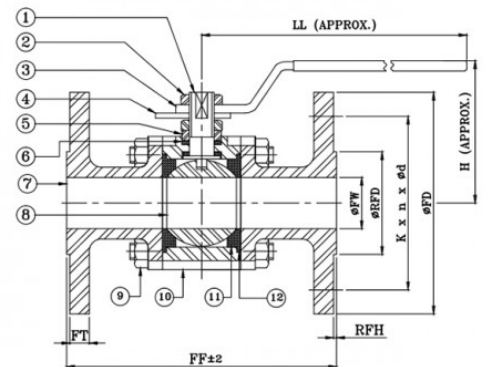
### Suitability

Water, Steam, Gas, Oil, Air



### Material Combination

P.No.	Name of Part	Material	Specification
1	Stem	Stainless Steel	ASTM A276 TYPE 316
2	Nut	Stainless Steel	ASTM A276 TYPE 316
3	Lever (With Plastic Sleeve)	Carbon Steel	-
4	Stopper	Carbon Steel	-
5	Gland	Stainless Steel	ASTM A276 TYPE 316
6	Packing Ring	PTFE	-
7	Body Connector	C.Stainless Steel	ASTM A351 Gr. CF8M
8	Ball	Stainless Steel	ASTM A351 Gr. CF8M
9	Stud / Bolts & Nuts	Alloy Steel / H.T. Steel	ASTM A193 Gr. B7 / B8 / ASTM A194 Gr. 2H/8
10	Body	C.Stainless Steel	ASTM A351 Gr. CF8M
11	Seat	PTFE	-
12	Gasket	PTFE	-



### Dimensional Data

Nominal Size (mm)	FF ±2	FT	ØFW (Min.)	ØRFD	RFH	ØFD	K	n	Ød	LL	H
15	108	8	11	34.9	2	90	60.3	4	5/8"	167	55
20	117	8.9	17	42.9	2	100	69.9	4	5/8"	167	60
25	127	9.6	23	50.8	2	110	79.4	4	5/8"	180	72
40	165	12.7	37	73	2	125	98.4	4	5/8"	206	90
50	178	14.3	49	92.1	2	150	120.7	4	3/4"	230	100

k - P.C.D; n - Number of Holes; Ød - Diameter of Holes