

FV-513 C.S.S. Investment Casting Ball Valve, Class-800

Features

Three Piece Design, Full Bore, Renewable Seat, SS 304 Trim
Screwed Female Ends BSP/BSPT/NPT/ Socket welded ends as per ASME-B16.11

Test Pressure

Body - 178 Bar (Hyd.)
Seat - 76 Bar (Hyd.)

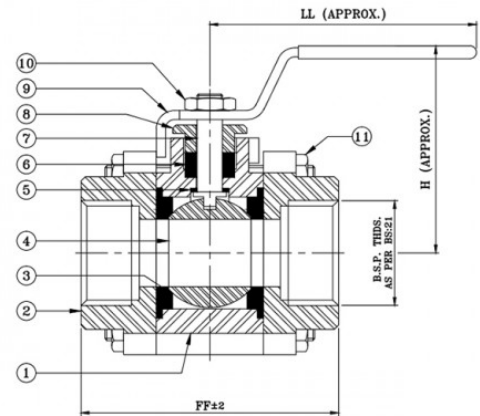
Suitability

Water, Steam, Gas, Oil, Air



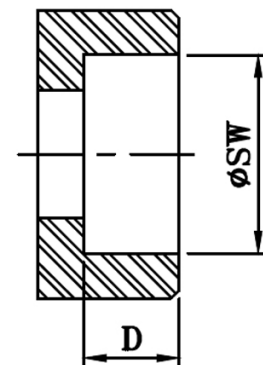
Material Combination

P.No.	Name of Part	Material	Specification
1	Body	C.S.S.	ASTM A351 Gr. CF8
2	Pipe Connector	C.S.S.	ASTM A351 Gr. CF8
3	Body Seal	PTFE	-
4	Ball	Stainless Steel	ASTM A351 Gr. CF8/ASTM A276 TYPE 304
5	Stem Seal	PTFE	-
6	Packing	PTFE	-
7	Stem Seal	Stainless Steel	ASTM A276 TYPE 304
8	Gland Nut	Stainless Steel	ASTM A276 TYPE 304
9	Lever	Carbon Steel	-
10	Lever Nut	Stainless Steel	TYPE - 304
11	Studs & Nuts	Alloy Steel, H.T. Steel	ASTM A193 Gr. B7/B8 & ASTM A194 Gr. 2H/8



Dimensional Data

Nominal Size (mm)	FF	LL	H	ØSW	D (Min.)
15	62	110	50	21.8 / 22.2	9.5
20	65	125	60	27.2 / 27.6	12.5
25	85	135	68	33.9 / 34.3	12.5
32	96	148	75	42.7 / 43.1	12.5
40	118	175	90	48.8 / 49.2	12.5
50	122	195	105	61.2 / 61.7	16



**SOCKET WELDING ENDS
AS PER ASME B16.11**