

## FV-515 C.C.S. Investment Casting Ball Valve, Class-800

### Features

Full Bore, Three Piece Design, Renewable Seat, SS Trim  
Screwed Female Ends BSP/BSPT/NPT/ Socket welded ends as per ASME B16.11

### Test Pressure

Body - 178 Bar (Hyd.)  
Seat - 76 Bar (Hyd.)

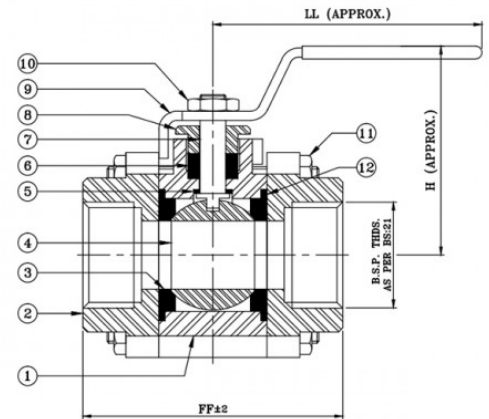
### Suitability

Water, Steam, Gas, Oil, Air



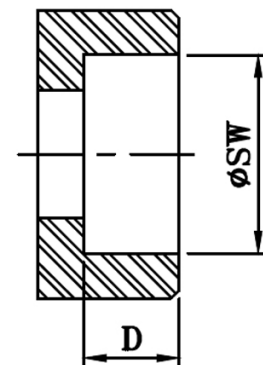
### Material Combination

P.No.	Name of Part	Material	Specification
1	Body	C.C.S.	ASTM A216 Gr.WCB
2	Pipe Connector	C.C.S.	ASTM A216 Gr.WCB
3	Body Seal	PTFE	-
4	Ball	Stainless Steel	ASTM A351 Gr. CF8/ ASTM A276 TYPE 304
5	Stem Seal	PTFE	-
6	Packing	PTFE	-
7	Stem Seal	Stainless Steel	ASTM A276 TYPE 410
8	Gland Nut	Stainless Steel	ASTM A276 TYPE 410
9	Lever	Carbon Steel	-
10	Lever Nut	Stainless Steel	TYPE - 410
11	Studs & Nuts	Alloy Steel, H.T. Steel	ASTM A193 Gr. B7/ ASTM A194 Gr. 2H



### Dimensional Data

Nominal Size (mm)	FF ±2	LL	H	ØSW	D (Min.)
15	66	104	55	21.8 / 22.2	9.5
20	75	104	65	27.2 / 27.6	12.5
25	85	135	82	33.9 / 34.3	12.5
32	102	180	85	42.7 / 43.1	12.5
40	115	180	94	48.8 / 49.2	12.5
50	130	216	115	61.2 / 61.7	16



**SOCKET WELDING ENDS  
AS PER ASME B16.11**