

## AV-277 C.C.S. Horizontal Lift Check Valve (Flanged Ends)

### Features

Flanged End as per BSEN 1092-1, PN-40, RF  
Product Standard : BS-13709 (BS-5160)

### Test Pressure

Body : 60 Bar (Hyd.)  
Seat : 40 Bar (Hyd.)  
Max. Working Temp. : 400°C  
Testing Standard : BS-12266, Part-1

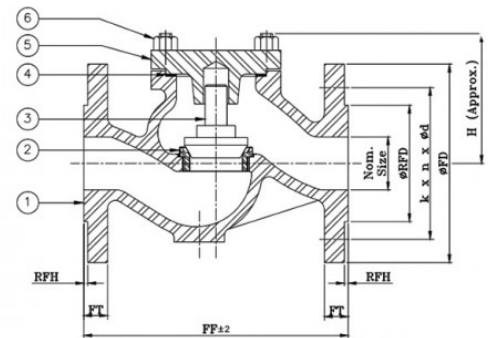
### Suitability

Water, Steam



### Material Combination

P.No.	Name of Part	Material	Specification
1	Body	C.C.S.	ASTM A216 Gr. WCB
2	Body Seat Ring	Stainless Steel / F.S.S./ C.A.S.	ASTM A276 Type 410 / ASTM A182 Gr. F6A / ASTM A217 Gr. CA15
3	Disc	S.S.	ASTM A276 Type 410
4	Gasket	C.A.F / Non Asbestos Fibre	-
5	Cover	C.C.S.	ASTM A216 Gr. WCB
6	Studs And Nuts	Carbon Steel	-



### Dimensional Data

Nominal Size (mm)	FF	H	ØFD	FT	ØRFD	RFH	k	n	Ød
15	130 ±2	75	95	16	45	2	65	4	14
20	150 ±2	80	105	18	58	2	75	4	14
25	160 ±2	88	115	18	68	2	85	4	14
32	180 ±2	96	140	18	78	2	100	4	18
40	200 ±2	100	150	18	88	3	110	4	18
50	230 ±2	116	165	20	102	3	125	4	18
65	290 ±3	140	185	22	122	3	145	8	18
80	310 ±3	152	200	24	138	3	160	8	18
100	350 ±3	178	235	24	162	3	190	8	22
125	400 ±3	215	270	26	188	3	220	8	26
150	480 ±3	260	300	28	218	3	250	8	26
200	600 ±4	335	375	34	285	3	320	12	30

k - P.C.D; n - Number of Holes; Ød - Diameter of Holes