

AV-280 C.C.S. Junction Globe Valve, PN 40

Features

Cast Steel Junction Steam Stop Valve, Bolted Bonnet, Outside screw, Yoke Type, Renewable Seat & Disc, SS Trim with Back Seat
Flanged Ends as per BSEN 1092-1, RF PN 40 (Drilled)
Product Standard : BSEN-13709

Test Pressure

Body : 60 Bar (Hyd.)
Seat : 40 Bar (Hyd.)
Max. Working Temp. : Upto 400°C

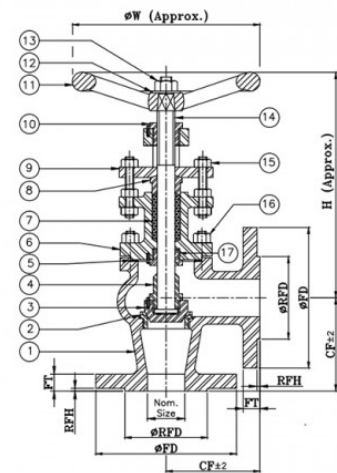
Suitability

Water, Steam, Oil



Material Combination

P.No.	Name of Part	Material	Specification
1	Body	C.C.S.	ASTM A216 Gr. WCB
2	Body Seat Ring	Stainless Steel	ASTM A276 Type 410 / ASTM A182 Gr. F6a / ASTM A217 Gr. CA15
3	Disc	Stainless Steel	ASTM A276 Type 410 / ASTM A182 Gr. F6a / ASTM A217 Gr. CA15
4	Disc Nut	Stainless Steel	ASTM A276 Type 410
5	Gasket	C.A.F. / Non Asbestos Fibre	-
6	Bonnet	C.C.S.	ASTM A216 Gr. WCB
7	Gland Packing	Graphited Asbestos	-
8	Gland	Stainless Steel	ASTM A276 Type 410
9	Gland Flange	C.C.S.	ASTM A216 Gr. WCB
10	Yoke Bush	Stainless Steel	ASTM A582 Type 416 / ASTM A276 Type 410
11	Handwheel	Cast Iron / M.I.	IS 210 Gr. FG200/ -
12	Washer	Carbon Steel	-
13	Nut	Carbon Steel	-
14	Stem	Stainless Steel	ASTM A276 Type 410
15	Studs & Nuts For Gland	Carbon Steel	-
16	Studs & Nuts	Carbon Steel	-
17	Back Seat Bush	Stainless Steel	ASTM A276 Type 410



Dimensional Data

Nominal Size (mm)	CF ±2	H	ØW	ØFD	FT	ØRFD	RFH	k	n	Ød
25	100	210	160	115	18	68	2	85	4	14
32	105	245	160	140	18	78	2	100	4	18
40	115	275	200	150	18	88	3	110	4	18
50	125	275	200	165	20	102	3	125	4	18
65	145	305	250	185	22	122	3	145	8	18
80	155	305	250	200	24	138	3	160	8	18
100	175	360	315	235	24	162	3	190	8	22
125	200	410	315	270	26	188	3	220	8	26
150	225	505	400	300	28	218	3	250	8	26



Manufacturers & Exporters of
Valves, Fittings & Boiler Mountings

k - P.C.D; n - Number of Holes; Ød - Diameter of Holes