

AV-111 Bronze Gate Valve, Screwed Ends, Class-2

Features

Product Standard	IS-778
Testing Standard	IS-778
Pressure / Class Rating	Class-2
Body Material Cum Standard	Bronze (IS 318 Gr. LTB2)
Product Description	Screwed in Bonnet, Inside Screw, Non Rising Stem, Handwheel Operated
Type of Seat	Integral Seat
Type of Wedge	Solid Wedge
Trim	Cu-Alloy
End Details	Screwed Female Parallel Threads (IS:554)
Test Pressure	Body: 2.4 Mpa (Hyd.), Seat: 1.6 Mpa (Hyd.)
Max. Working Temperature	45°C

Notes

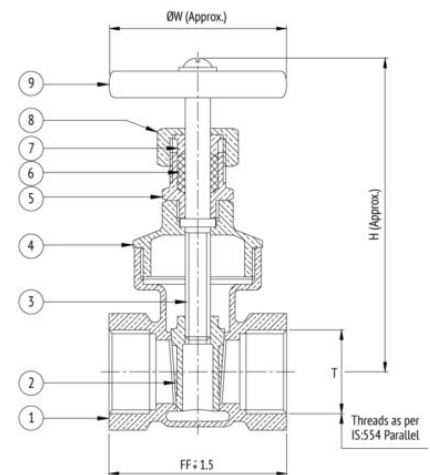
Other screwed end specifications can be provided on request.

Suitability

Water, Oil

Material Combination

S.No	Description	No.	Material
1	Body	1	Bronze
2	Wedge	1	Bronze
3	Stem	1	H.T. Brass
4	Bonnet	1	Bronze
5	Stuffing Box	1	Bronze
6	Packing	-	Asbestos
7	Gland	1	Bronze
8	Gland Nut	1	Bronze
9	Handwheel	1	C.I. / D.I.



Dimensional Data

Size (mm)	FF	H	ØW	T
15	60	100	53	1/2"
20	60	110	58	3/4"
25	70	130	67	1"
32	80	144	79	1.1/4"
40	90	162	87	1.1/2"
50	100	175	98	2"
65	105	222	104	2.1/2"
80	125	248	140	3"
100	160	310	183	4"