

## AV-112 Gun Metal Gate Valve (Flanged Ends) Class 2

### Features

Screwed in Bonnet, Inside Screw, Non-Rising Stem, Flanged as per IS 778 Class 2

### Test Pressure

Body : 2.4 MPa (Hyd.)

Seat : 1.6 MPa (Hyd.)

Max. Working Pressure : 1.6 MPa (Hyd.)

Max. Working Temperature : Upto 45°C

### Testing Standard

IS-778

### Note

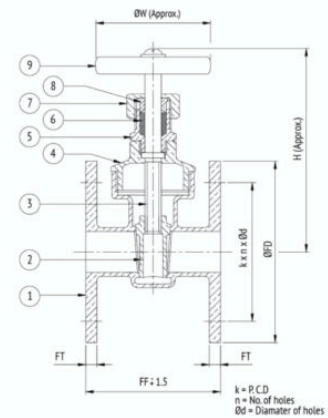
Other Flanged End Specification can be provided on request.

### Suitability

Water, Oil

### Material Combination

P.No.	Name of Part	Material	Specification
1	Body	Bronze	BS EN 1982 Gr. CC491K / IS 318 Gr. LTB2
2	Wedge	Bronze	BS EN 1982 Gr. CC491K / IS 318 Gr. LTB2
3	Stem	H.T. Brass	IS 6912 Gr.FLB / IS 320
4	Bonnet	Bronze	BS EN 1982 Gr. CC491K / IS 318 Gr. LTB2
5	Stuffing Box	Bronze	BS EN 1982 Gr. CC491K / IS 318 Gr. LTB2
6	Packing	Asbestos	-
7	Gland Nut	Bronze	BS EN 1982 Gr. CC491K / IS 318 Gr. LTB2
8	Gland	Bronze	BS EN 1982 Gr. CC491K / IS 318 Gr. LTB2
9	Handwheel	C.I. / Steel	BS 1561 Gr. GJL200 / IS 210 Gr. FG200 / -



### Dimensional Data

Nominal Size (mm)	FF	H	ØW	ØFD	FT	k	n	Ød
15	72	100	53	95	6	65	4	14
20	76	110	60	105	6	75	4	14
25	90	130	70	115	8	85	4	14
32	100	144	80	140	8	100	4	18
40	110	160	87	150	9	110	4	18
50	120	175	98	165	11	125	4	18
65	140	222	104	185	13	145	4	18
80	150	248	140	200	13	160	8	18
100	190	310	183	220	16	180	8	18