

AV-224 Bronze Combined Cock & Feed Check Valve

Features

Flanges as per BS-10 Table 'F' FF (Undrilled)

Test Pressure

300 Psig (Hyd.)

Max. B.O.P. : 150 Psig

Max. Working Temp. : 220°C

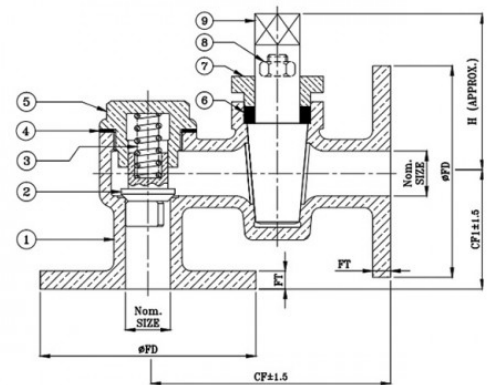
Suitability

Water, Steam



Material Combination

P.No.	Name of Part	Material	Specification
1	Body	Bronze	IBR 282 (a) (iv) Gr. B / BSEN 1982 Gr. CC491K
2	Disc	Bronze	IBR 282 (a) (iv) Gr. B / BSEN 1982 Gr. CC491K
3	Spring	Carbon Steel	IBR 307
4	Gasket	C.A.F.	IS 2712
5	Cover	Bronze	IBR 282 (a) (iv) Gr. B / BSEN 1982 Gr. CC491K
6	Packing	Graphited Asbestos	-
7	Gland Flange	Bronze	IBR 282 (a) (iv) Gr. B / BSEN 1982 Gr. CC491K
8	Gland Studs & Nuts	Carbon Steel	-
9	Plug	Bronze	IBR 282 (a) (iv) Gr. B / BSEN 1982 Gr. CC491K



Dimensional Data

Nominal Size (mm)	CF ±1.5	CF1 ±1.5	H	ØFD	FT
15	103	46	62	95.3	7.9
20	111	49	80	101.6	7.9
25	135	60	89	120.7	9.5
32	150	67	103	133.4	9.5
40	168	73	102	139.7	11.1
50	198	81	140	165.1	11.1