

AV-288A (CF8) C.S.S. Gate Valve, Class-300

Features

Bolted Bonnet, O/S & Yoke Type, Rising Stem, Renewable Seat, Solid or Flexible Wedge, SS 304 Trim

Flanges as per ASME B16.5, Class-300 RF (Drilled)

Product Standard: BS-1414/API-600

Test Pressure

Body : 76 Bar (Hyd.)

Seat : 55 Bar (Hyd.)

Testing Standard : BSEN-12266-1/ API-598

Suitability

Water, Steam, Oil

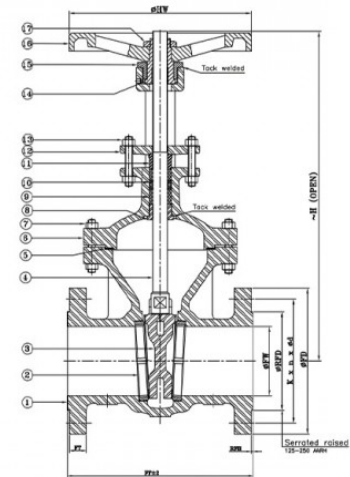


Material Combination

P.No.	Name of Part	Material	Specification
1	Body	C.S.S	ASTM A351 Gr. CF8
2	Body Seat Ring	C.S.S/F.S.S.	ASTM A351 Gr. CF8/ ASTM A182 Gr. F304
3	Wedge	C.S.S	ASTM A351 Gr. CF8
4	Stem	Stainless Steel	ASTM A276 TYPE 304
5	Gasket	Spiral Wound S.S. 304 Graphoil Filler With Inner Ring	-
6	Bonnet	C.S.S	ASTM A351 Gr. CF8
7	Studs & Nuts	Alloy Steel/ H.T Steel	ASTM A193 Gr. B7/B8/ASTM A194 Gr. 2H/8
8	Back Seat Bush	Stainless Steel	ASTM A276 TYPE 304
9	Gland Packing	Flexible Graphite	-
10	Lantern Ring	Stainless Steel	ASTM A276 TYPE 304
11	Gland Follower	Stainless Steel	ASTM A276 TYPE 304
12	Gland Flange	C.S.S.	ASTM A351 Gr. CF8
13	Gland Studs & Nuts	Alloy Steel/ H.T Steel	ASTM A193 Gr. B7/B8/ASTM A194 Gr. 2H/8
14	Yoke Sleeve	Al. Bronze	BSEN 1982 Gr. CC331G
15	Yoke sleeve Retaining Nut	C.S.S.	ASTM A351 Gr. CF8
16	Handwheel	D.I./ M.I.	ASTM A536 Gr. 80-55-06/ ASTM A338
17	Handwheel Retaining Nut	S.S./ C.S.S	ASTM A276 TYPE 304/ ASTM A351 GR. CF8
18	Gear Box Assembly*	C.I.	-

NOTE : 1. Parts marked with * are optional and are for particular sizes.

2. This item can be supplied in WC6, WC9 material also.



Dimensional Data

Nominal Size (mm)	FF	FT	ØFW (Min.)	ØRFD	RFH	ØFD	k	n	Ød	ØHW	H
40	190 ±2	19.1	38.1	73	2	155	114.3	4	7/8"	210	410
50	216 ±2	20.7	50.8	92.1	2	165	127	8	3/4"	210	435
65	241 ±2	23.9	63.5	104.8	2	190	149.2	8	7/8"	210	495

Nominal Size (mm)	FF	FT	ØFW (Min.)	ØRFD	RFH	ØFD	k	n	Ød	ØHW	H
80	282 ±2	27	76.2	127	2	210	168.3	8	7/8"	210	455
100	305 ±2	30.2	101.6	157.2	2	255	200	8	7/8"	300	620
125	381 ±2	33.4	127	185.7	2	280	235	8	7/8"	300	915
150	403 ±2	35	152.4	215.9	2	320	269.9	12	7/8"	400	875
200	419 ±2	39.7	203.2	269.9	2	380	330.2	12	1"	450	1160
250	457 ±2	46.1	254	323.8	2	445	387.4	16	1.1/8"	500	1455
300	502 ±3	49.3	304.8	381	2	520	450.8	16	1.1/4"	450	1600

k - P.C.D; n - Number of Holes; Ød - Diameter of Holes