

## AV-252 C.I. Junction Steam Stop Valve, PN 16

### Features

Bolted Bonnet, Outside Screw & Yoke Type  
Flanges as per BSEN 1092-2 (PN 16)

### Test Pressure

Body : 24 kg/cm<sup>2</sup>g (348 Psig) Hyd.  
Seat : 16 kg/cm<sup>2</sup>g (255 Psig) Hyd.  
Max. Working Temp. : 220°C

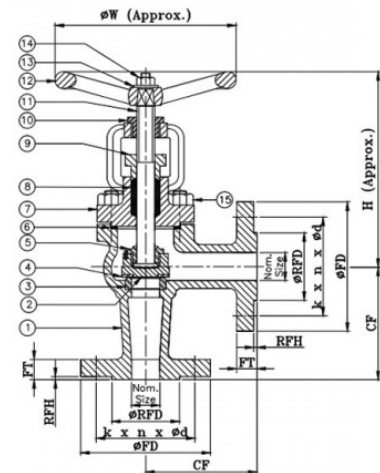
### Suitability

Water, Steam



### Material Combination

P.No.	Name of Part	Material	Specification
1	Body	Cast Iron	IBR 86 to 93 Gr. A
2	Disc Holder	Cast Iron	IBR 86 to 93 Gr. A
3	Body Seat Ring	Stainless Steel	ASTM A276 Type 410
4	Disc	Stainless Steel	ASTM A276 Type 410
5	Disc Nut	Stainless Steel	ASTM A276 Type 410
6	Gasket	CAF	-
7	Bonnet	Cast Iron	IBR 86 to 93 Gr. A
8	Gland Packing	Graphited Asbestos	-
9	Gland	Cast Iron	IBR 86 to 93 Gr. A
10	Yoke Bush	Stainless Steel	ASTM A582 Type 416
11	Stem	Stainless Steel	ASTM A276 Type 410
12	Handwheel	Cast Iron	IS 210 Gr. FG200
13	Washer	Carbon Steel	-
14	Nut	Carbon Steel	-
15	Studs And Nuts	Carbon Steel	-
16	T - Head Bolts & Nuts for Gland (Not Shown)	Carbon Steel	-



### Dimensional Data

Nominal Size (mm)	CF	H	ØW	ØFD	FT	ØRFD	RFH	k	n	Ød
15	90 ±1	150	100	95	14	46	2	65	4	14
20	95 ±1	150	100	105	16	56	2	75	4	14
25	100 ±1	160	100	115	16	65	3	85	4	14
32	105 ±1	170	125	140	18	76	3	100	4	19
40	115 ±1	220	160	150	18	84	3	110	4	19
50	125 ±1	260	160	165	20	99	3	125	4	19
65	145 ±1	280	200	185	20	118	3	145	4	19
80	155 ±1	300	200	200	22	132	3	160	8	19
100	175 ±1	350	250	220	24	156	3	180	8	19
125	200 ±1	400	315	250	26	184	3	210	8	19
150	225 ±2	430	400	285	26	211	3	240	8	23

k - P.C.D; n - Number of Holes; Ød - Diameter of Holes