

## AV-260 Cast Iron Vertical Inverted Bucket Type Steam Trap, Screwed Ends

### Features

Body Material Cum Standard	Cast Iron (IBR 86 to 93 Gr. A)
Product Description	with Renewable Stainless Steel Working Parts
Trim	Valve & Ball Seat: 13% Cr. (SS 410) Bucket: Stainless Steel (Type 304)
End Details	Screwed Female BSP Parallel Threads (BS-21)
Test Pressure	Body: 300 Psig (Hyd.)
Max. Working Pressure	150 Psig (Steam)
Max. Working Temperature	220°C

### Notes

Test Certificate in Form III-C as per IBR is furnished with every supply.

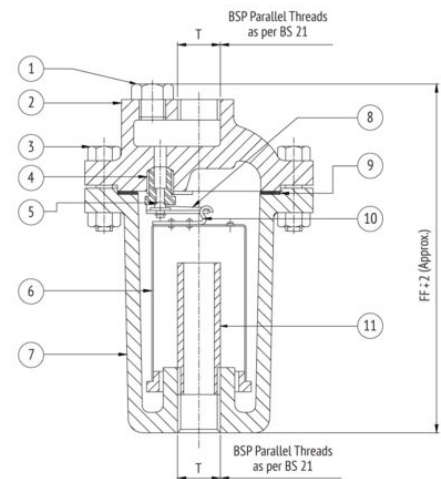
### Suitability

Water, Steam



### Material Combination

S.No	Description	No.	Material
1	Plug	1	Carbon Steel
2	Cover	1	Cast Iron
3	Bolts & Nuts	To Suit	Carbon Steel
4	Valve Seat	1	Stainless Steel
5	Ball Seat	1	Stainless Steel
6	Bucket	1	Stainless Steel
7	Body	1	Cast Iron
8	Valve Lever	1	Stainless Steel
9	Gasket	1	C.A.F.
10	Hook	1	Stainless Steel
11	Syphon Pipe	1	Carbon Steel



### Dimensional Data

Size (mm)	FF	T
15	175	1/2"
20	210	3/4"
25	275	1"
32	395	1.1/4"
40	395	1.1/2"
50	452	2"