



**ATAM**

Valves, Fittings & Boiler Mountings



Ball Valves

## Product Range

---

50+  
YEARS  
OF  
EXCELLENCE



SAFETY  
**ASSURED**

PRECISION  
**ENGINEERED**

RELIABILITY  
**GUARANTEED**

---

# Atam Valves Limited

[www.atamvalves.in](http://www.atamvalves.in)

- Established in 1972
- ISO 9001, ISO 14001, ISO 45001, API Q1  
ISI, IBR, PED certified
- Inhouse R&D, Designing & mould making facilities
- Work force of more than 500 professionals
- Factories covering 500,000 SFT
- Wide range of machining & testing facilities
- Listed on "BSE (Bombay Stock Exchange)" & "NSE (National Stock Exchange)"
- Leading manufacturer of precision-quality valve solutions, including GGC Valves, Ball valves, Butterfly valves, Steam Traps, NRV, PRV, Strainers, Boiler mounting / accessories & stainless steel fittings etc.
- Materials available include - DI, CI, CS, Forged Steel, Bronze, SS, NAB / AB etc.
- Meeting the needs of ever-demanding applications in - Steam engineering, O&G, Pharmaceutical, Marine, Mining, Water & Wastewater Mgt., Textile Mills, Sugar Mills, Food Processing, HVAC etc.
- Servicing conditions -192 C to 550 C & pressure rating up to 10,000 Lbs
- Extensive sales and distribution network in India and Abroad



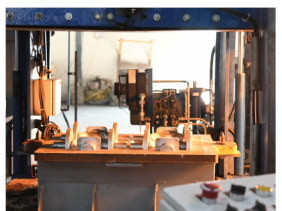
ATAM Valves is a recipient of  
**National Award for Quality Products**  
and  
**National Award for best efforts in Entrepreneurship**

ATAM Valves is fully committed to its customer by offering the products that meet requirements and exceed the expectations.



Valves, Fittings & Boiler Mountings

Infrastructure



**ATAM**

Valves, Fittings &amp; Boiler Mountings

## Bronze / S.S. Non-IBR Valves

### Union Bonnet Globe Valve No.9

<b>AV-1</b>	Bronze (Screwed) Class-150	8 - 100 mm
<b>IC-1</b>	S.S. (Screwed) PN-25	15 - 50 mm
<b>AV-2</b>	Bronze (Flanged) Class-150	15 - 100 mm

W  
S  
G  
O  
A

### Globe Valve No.5 & No.10

<b>AV-6</b>	Bronze (Screwed) PN-20	8 - 100 mm
<b>IC-6</b>	S.S. (Screwed) PN-20	15 - 50 mm

W  
S  
G  
O  
A

### Globe Valve No.4 & No.8

<b>AV-8</b>	Bronze (Screwed) PN-16	15 - 50 mm
<b>AV-41</b>	Bronze (Flanged) PN-16	15 - 200 mm

W  
S  
G  
O  
A

### Horizontal Lift Check Valve No.4

<b>AV-7</b>	Bronze (Screwed) PN-16	15 - 100 mm
<b>IC-51</b>	S.S. (Screwed) PN-16	15 - 50 mm
<b>AV-55</b>	Bronze (Flanged) PN-16	15 - 100 mm

W  
S  
G  
O  
A

### Horizontal Lift Check Valve No.5 & No.10

<b>AV-27</b>	Bronze (Screwed) PN-20	15 - 100 mm
<b>IC-29</b>	S.S. (Screwed) PN-25	15 - 50 mm

W  
S  
G  
O  
A

### Union Cover Horizontal Lift Check Valve No.9

<b>AV-34</b>	Bronze (Screwed) PN-20	15 - 100 mm
<b>IC-34</b>	S.S. (Screwed) PN-25	15 - 50 mm
<b>AV-53</b>	Bronze (Flanged) PN-20	15 - 100 mm

W  
S  
G  
O  
A

### Angle Check Valve Right Angle Pattern

<b>AV-26</b>	Bronze (Screwed) PN-16	15 - 50 mm
--------------	------------------------	------------

W  
S  
G  
O  
A

### Thermodynamic Steam Trap

<b>AV-12</b>	Bronze (Screwed)	15 - 50 mm
--------------	------------------	------------

W  
S  
G  
O  
A

### Y-Type Strainer

<b>AV-14</b>	Bronze (Screwed)	15 - 65 mm
<b>IC-14</b>	S.S. (Screwed)	15 - 50 mm

W  
S  
G  
O  
A

**Gland Packed Water Level Gauge**

<b>AV-16A</b>	Bronze (Screwed)	10 - 20 mm
<b>AV-17</b>	Bronze (Flanged)	10 - 20 mm


**W  
S  
G  
O  
A**

Asbestos Packed also available

**Sight Flow Indicator**

<b>AV-31</b>	Bronze (Screwed)	15 - 50 mm
<b>AV-32</b>	Bronze (Screwed)	15 - 40 mm


**W  
S  
G  
O  
A**
**Pressure Relief Valve Open / Closed Discharge**

<b>AV-36</b>	Bronze (Screwed)	15 - 50 mm
<b>AV-37</b>	Bronze (Screwed)	15 - 80 mm


**W  
S  
G  
O  
A**
**Globe Valve No.4**

<b>AV-40</b>	Bronze (Screwed) PN-16	8 - 100 mm
<b>IC-40</b>	S.S. (Screwed) PN-16	15 - 50 mm


**W  
S  
G  
O  
A**
**Gland Cock**

<b>AV-57</b>	Bronze (Screwed)	15 - 50 mm
<b>AV-63</b>	Bronze (Flanged)	15 - 100 mm


**W  
S  
G  
O  
A**
**Plug Cock (Main Cock)**

<b>AV-64</b>	Bronze (Screwed)	10 - 80 mm
<b>AV-60</b>	Bronze (Flanged)	15 - 100 mm


**W  
S  
G  
O  
A**
**Angle Globe Valve No.4 Right Angle Pattern**

<b>AV-70</b>	Bronze (Screwed) PN-16	8 - 50 mm
--------------	------------------------	-----------


**W  
S  
G  
O  
A**
**Gate Valve Pegular Type / Non-Rising Stem**

<b>AV-75</b>	Bronze (Screwed)	8 - 150 mm
<b>IC-99</b>	S.S. (Screwed)	15 - 50 mm
<b>AV-73</b>	Bronze (Flanged)	15 - 150 mm


**W  
S  
G  
O  
A**
**Multi Utility Check Valve**

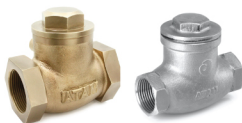
<b>IC-87</b>	S.S. (Screwed)	15 - 50 mm
--------------	----------------	------------


**W  
S  
G  
O  
A**

**Gate Valve Rising Stem**
**AV-110** Bronze (Screwed) 15 - 100 mm

 W  
S  
G  
O  
A

**Swing Check Valve**
**AV-76** Bronze (Screwed) PN-16 15 - 50 mm

**IC-76** S.S. (Screwed) PN-16 15 - 50 mm

 W  
S  
G  
O  
A

**Vertical Lift Check Valve One / Two Piece Design**
**AV-79** Bronze (Screwed) 15 - 100 mm

**IC-79** S.S. (Screwed) 15 - 50 mm

**AV-80** Bronze (Screwed) PN-20 15 - 80 mm

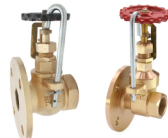
 W  
S  
G  
O  
A

**Foot Valve (Screwed)**
**AV-86** Bronze PN 20 15 - 200 mm

**AV-90** Bronze (Hole Type) PN 20 15 - 80 mm

 W  
S  
G  
O  
A

**Globe / Gate Valve with Indicator & Pad Locking Arrangement**
**AV-92** Bronze 15 - 50 mm

**AV-92A** Bronze 15 - 50 mm

 W  
S  
G  
O  
A

**Gate / Globe Valve with Indicator & Pad Locking Arrangement**
**AV-93** Bronze (Flanged) 15 - 150 mm

**AV-94** Bronze (Flanged) 15 - 100 mm

 W  
S  
G  
O  
A

**Butterfly Valve**
**AV-96A** Cast Iron (S.G. Iron Disc) PN-10 ISI 40 - 600 mm

**AV-96B** Cast Iron (S.S. Disc) PN-10 ISI 40 - 600 mm

**AV-96C** Cast Steel (S.S. Disc) PN-40 40 - 600 mm

**AV-96D** Cast Iron (S.G. Iron Disc) PN-16 ISI 40 - 600 mm

**AV-96E** Cast Iron (S.S. Disc) PN-16 ISI 40 - 600 mm

**AV-96F** Ductile Iron (S.G. Iron Disc) PN-25 40 - 600 mm

**AV-96G** Ductile Iron (S.S. Disc) PN-25 40 - 600 mm

**AV-96I** Aluminium (CF8 Disc) PN-10 40 - 200 mm

**AV-96J** Aluminium (CF8 Disc) PN-16 40 - 200 mm

 W  
S  
G  
O  
A

Also Available with Actuator &amp; Limit Switch

Valves Sizes 8" &amp; above are available with Gear Arrangement.

**Flap Non Return Valve**
**AV-97** S.G.Iron PN-16 40 - 300 mm

**AV-97A** C.C.S. Class-150 40 - 300 mm

**AV-97B** C.S.S. Class-150 (S.S. 304) 40 - 300 mm

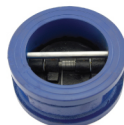
 W  
S  
G  
O  
A

**Kinetic Type Air Release Valve**
**AV-128** Cast Iron (Flanged) PN-1.0 40 - 200 mm

**W  
O**
**Ball Type Foot Valve**
**AV-132** Cast Iron (Flanged) PN-10 & 16 50 - 300 mm

**W**
**Dual Plate Check Valve**
**AV-131** Cast Iron PN-16 50 - 300 mm

**AV-131A** C.C.S. (WCB) Class-150 50 - 500 mm

**AV-131B** S.G. Iron PN-25 40 - 200 mm

**W  
S  
G  
O  
A**

**Vertical Lift Check Valve**
**AV-101** Bronze (Screwed) Class-1 15 - 100 mm

**W  
S  
G  
O  
A**
**Gate Valve**
**AV-102** Bronze (Screwed) Class-1 15 - 100 mm

**AV-103** Bronze (Flanged) Class-1 15 - 100 mm

**AV-111** Bronze (Screwed) Class-2 15 - 100 mm

**AV-112** Bronze (Flanged) Class-2 15 - 100 mm

**W  
S  
G  
O  
A**
**Globe Valve**
**AV-104** Bronze (Flanged) Class-1 15 - 100 mm

**AV-105** Bronze (Screwed) Class-1 15 - 100 mm

**AV-113** Bronze (Flanged) Class-2 15 - 100 mm

**AV-114** Bronze (Screwed) Class-2 15 - 100 mm

**W  
S  
G  
O  
A**
**Horizontal Lift Check Valve**
**AV-106** Bronze (Screwed) Class-1 15 - 100 mm

**AV-107** Bronze (Flanged) Class-1 15 - 100 mm

**W  
S  
G  
O  
A**
**Gate Valve Yoke Type**
**AV-120** Bronze (Screwed) Class-1 15 - 100 mm

**AV-121** Bronze (Flanged) Class-1 15 - 100 mm

**AV-122** Bronze (Screwed) Class-2 15 - 100 mm

**AV-123** Bronze (Flanged) Class-2 15 - 100 mm

**W  
S  
G  
O  
A**
**Globe Valve Yoke Type**
**AV-124** Bronze (Screwed) Class-1 15 - 100 mm

**AV-125** Bronze (Flanged) Class-1 15 - 100 mm

**AV-126** Bronze (Screwed) Class-2 15 - 100 mm

**AV-127** Bronze (Flanged) Class-2 15 - 100 mm

**W  
S  
G  
O  
A**

**Sluice Valve**

- AV-117** Cast Iron (Flanged) PN-1.0 50 - 600 mm  
**AV-117A** Cast Iron (Flanged) PN-1.6 50 - 600 mm


 W  
S  
G  
O  
A

**Gate Valve**

- AV-118** Cast Iron (Flanged) PN-1.0 50 - 600 mm  
**AV-118A** Cast Iron (Flanged) PN-1.6 50 - 600 mm


 W  
S  
G  
O  
A

**Reflux (Non-Return) Valve**

- AV-119** Cast Iron (Flanged) PN-1.0 50 - 500 mm  
**AV-119A** Cast Iron (Flanged) PN-1.6 50 - 500 mm


 W  
S  
G  
O  
A

**Resilient Seated Gate Valve**

- AV-129** Ductile Iron (Flanged) 50 - 800 mm  
 PN-10 / PN-16


 W  
S  
G  
O  
A

**Balancing Valve**

- AV-130** Cast Iron (Flanged) Class-150 25 - 600 mm  
 (Also available in different material & pressure classes)


 W  
S  
G  
O  
A


Ball Valves

**Ball Valves**
**Ball Valve Two Piece Design**

- FV-501** Bronze (Screwed) PN-20 8 - 100 mm  
**FV-502** Bronze (Flanged) PN-16 15 - 125 mm


 W  
S  
G  
O  
A

**Ball Valve Two / Three Piece Design**

- FV-503** Cast Iron (Screwed) Class-125 15 - 100 mm  
**FV-504** Cast Iron (Flanged) 3Pc. Design 15 - 200 mm


 W  
S  
G  
O  
A

**Ball Valve with Strainer One Piece Design**

- FV-506** Bronze (Screwed) PN-20 15 - 50 mm


 W  
S  
G  
O  
A

**Ball Valve Two / Three Piece Design**

<b>FV-507</b>	S.S. (Screwed) CF8	6 - 50 mm
<b>FV-508</b>	S.S. (Screwed) CF8M	6 - 50 mm
<b>FV-509</b>	S.S. (Flanged) CF8M 3Pc.	15 - 100 mm
<b>FV-510</b>	S.S. (Flanged) CF8 3Pc.	15 - 100 mm


 W  
S  
G  
O  
A

**Ball Valve One Piece Design**

<b>FV-511</b>	S.S. (Screwed) CF8	15 - 50 mm
<b>FV-512</b>	S.S. (Screwed) CF8M	15 - 50 mm


 W  
S  
G  
O  
A

**Ball Valve Three Piece Design**

<b>FV-513</b>	S.S. (Screwed) CF8	15 - 50 mm
<b>FV-514</b>	S.S. (Screwed) CF8M	15 - 50 mm


 W  
S  
G  
O  
A

**Ball Valve Three Piece Design**

<b>FV-515</b>	C.C.S. (Screwed) WCB Class-800	15 - 50 mm
<b>FV-516</b>	C.C.S. (Flanged) WCB Class-150	15 - 100 mm
<b>FV-516A</b>	C.C.S. (Flanged) WCB Class-150 (2Pc. Design)	15 - 100 mm


 W  
S  
G  
O  
A


Valves, Fittings &amp; Boiler Mountings

 IBR  
Approved

**Bronze Valves**
**Globe Steam Stop Valve**

<b>AV-201</b>	Bronze (Screwed)	15 - 50 mm
<b>AV-202</b>	Bronze (Flanged) Table-H	15 - 50 mm
<b>AV-202A</b>	Bronze (Flanged) Table-F	15 - 50 mm


 W  
S  
G  
O  
A

**Auxiliary Steam Stop Valve**

<b>AV-203</b>	Bronze (Screwed)	15 - 50 mm
<b>AV-204</b>	Bronze (Flanged) Table-H	15 - 50 mm
<b>AV-204A</b>	Bronze (Flanged) Table-F	15 - 50 mm


 W  
S  
G  
O  
A

**Y-Type Strainer**

<b>AV-208</b>	Bronze (Screwed)	15 - 50 mm
<b>AV-209</b>	Bronze (Flanged)	15 - 50 mm


 W  
S  
G  
O  
A

**Horizontal Lift Check Valve**

<b>AV-210</b>	Bronze (Screwed)	15 - 50 mm
<b>AV-211</b>	Bronze (Flanged)	15 - 50 mm


 W  
S  
G  
O  
A

**Sleeve Packed Water Level Gauge**

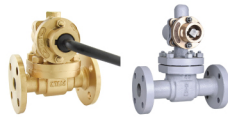
<b>AV-214</b>	Bronze (Flanged) - IBR	15 - 20 mm
<b>AV-281</b>	Cast Carbon Steel (Flanged)	20 mm
<b>AV-281A</b>	C.C.S. Reflux Level Gauge (Flanged)	20 mm


**W**  
**S**  
**G**  
**O**  
**A**
**Thermodynamic Steam Trap**

<b>AV-220</b>	Bronze (Screwed)	15 - 25 mm
<b>AV-270</b>	Stainless Steel (Screwed)	15 - 50 mm
<b>AV-300</b>	Drop Forged S.S. (Screwed)	15 - 25 mm


**W**  
**S**  
**G**  
**O**  
**A**
**Parallel Slide Blow Off Valve**

<b>AV-221</b>	Bronze (Flanged)	25 - 80 mm
<b>AV-278</b>	Cast Carbon Steel (Flanged) Table-J	25 - 65 mm
<b>AV-278A</b>	Cast Carbon Steel (Flanged) Class-300	25 - 65 mm


**W**  
**S**  
**G**  
**O**  
**A**
**Fusible Plug One / Two Piece / Loco Type Design**

<b>AV-222</b>	Bronze (Screwed) - Two Piece	15 - 50 mm
<b>AV-223</b>	Bronze (Screwed) - One Piece	15 - 25 mm
<b>AV-242</b>	Bronze (Screwed) - Loco Type	25 - 32 mm


**W**  
**S**  
**G**  
**O**  
**A**
**Vertical Non-Return Valve Two Piece Design**

<b>AV-227</b>	Bronze (Screwed)	15 - 50 mm
<b>AV-228</b>	Bronze (Flanged)	15 - 50 mm


**W**  
**S**  
**G**  
**O**  
**A**
**Pressure Reducing Valve Diaphragm Type**

<b>AV-229</b>	Bronze (Screwed)	15 - 50 mm
---------------	------------------	------------


**W**  
**S**  
**G**  
**O**  
**A**
**Safety Valve Open / Enclosed Discharge**

<b>AV-230</b>	Right Angle - Enclosed (S/E)	15 - 50 mm
<b>AV-231</b>	Open (S/E)	
<b>AV-232</b>	Pop Type - Open (S/E), <b>AV-233</b> Pop Type - Open (F/E)	
<b>AV-234</b>	Right Angle Pop Type - Enclosed (S/E), <b>AV-235</b> Right Angle Pop Type - Enclosed (F/E)	


**W**  
**S**  
**G**  
**O**  
**A**
**Sight Flow Indicator Single Window**

<b>AV-238</b>	Bronze (Screwed)	15 - 50 mm
---------------	------------------	------------


**W**  
**S**  
**G**  
**O**  
**A**
**Inspector's Test / Pressure Gauge Cock**

<b>AV-239</b>	Bronze (Screwed)	10 - 15 mm
<b>AV-241</b>	Bronze (Screwed)	10 - 15 mm


**W**  
**S**  
**G**  
**O**  
**A**

## Cast Iron / Cast Steel Valves

### Globe / Junction Steam Stop Valve

<b>AV-251</b>	Cast Iron (Flanged) PN-16	15 - 150 mm
<b>AV-252</b>	Cast Iron (Flanged) PN-16	15 - 150 mm


 W  
S  
G  
O  
A

### Horizontal Lift Check Valve - Straight / Right Angle Pattern

<b>AV-253</b>	Cast Iron (Flanged) PN-16	15 - 150 mm
<b>AV-255</b>	Cast Iron (Flanged) PN-16	15 - 150 mm


 W  
S  
G  
O  
A

### Y-Type Strainer

<b>AV-256</b>	Cast Iron (Flanged)	25 - 200 mm
<b>AV-257</b>	Cast Iron (Screwed)	15 - 50 mm


 W  
S  
G  
O  
A

### Accessible Feed Check Valve Straight / Right Angle Pattern

<b>AV-258</b>	Cast Iron (Flanged)	25 - 65 mm
---------------	---------------------	------------


 W  
S  
G  
O  
A

### Stop Cum Non-Return Valve Straight / Right Angle Pattern

<b>AV-259</b>	Cast Iron (Flanged) PN-16	15 - 200 mm
---------------	---------------------------	-------------


 W  
S  
G  
O  
A

### Vertical Inverted Bucket Type Steam Trap

<b>AV-260</b>	Cast Iron (Screwed)	15 - 50 mm
---------------	---------------------	------------


 W  
S  
G  
O  
A

### Single / Double Post Hi-Lift Safety Valve Right Angle Pattern

<b>AV-261</b>	Cast Iron (Flanged)	25 - 50 mm
<b>AV-262</b>	Cast Iron (Flanged)	25 - 50 mm


 W  
S  
G  
O  
A

### Pressure Reducing Valve (Pilot Operated)

<b>AV-263</b>	Cast Iron (Flanged)	25 - 50 mm
<b>AV-263A</b>	Ductile Iron, PN-16 (Flanged)	40 - 600 mm
<b>AV-287</b>	Cast Carbon Steel (Flanged)	25 - 50 mm



Water

Steam

 W  
S  
G  
O  
A

### Moisture Separator

<b>AV-264</b>	Cast Iron (Flanged)	25 - 150 mm
<b>AV-291</b>	Cast Carbon Steel (Flanged)	25 - 150 mm


 W  
S  
G  
O  
A

**Non-Slam Check Valve**

<b>AV-268</b>	Stainless Steel Class-150	15 - 100 mm
<b>AV-268A</b>	Stainless Steel Class-300	15 - 100 mm


**W**  
**S**  
**G**  
**O**  
**A**
**Ball Float Steam Trap**

<b>AV-269</b>	Cast Iron (Screwed)	15 - 50 mm
---------------	---------------------	------------


**W**  
**S**  
**G**  
**O**  
**A**
**Piston Valve**

<b>AV-271</b>	Cast Carbon Steel (Flanged) PN-40	25 - 100 mm
<b>AV-271A</b>	Cast Carbon Steel (Flanged) Class-150	25 - 100 mm
<b>AV-271B</b>	Cast Carbon Steel (Flanged) Class-300	25 - 100 mm

Suitable for : Super Heated Steam, Condensate, Thermic Fluid, Hydro Carbon Chemical


**W**  
**S**  
**G**  
**O**  
**A**
**Globe Steam Stop Valve Straight / Right Angle Pattern**

<b>AV-276</b>	Cast Carbon Steel (Flanged) PN-40	15 - 300 mm
<b>AV-280</b>	Cast Carbon Steel (Flanged) PN-40	25 - 150 mm


**W**  
**S**  
**G**  
**O**  
**A**
**Horizontal Lift Check Valve**

<b>AV-277</b>	Cast Carbon Steel (Flanged) PN-40	15 - 250 mm
---------------	-----------------------------------	-------------


**W**  
**S**  
**G**  
**O**  
**A**
**Y-Type Strainer**

<b>AV-279</b>	Cast Carbon Steel (Flanged) Table-J	25 - 250 mm
<b>AV-279A</b>	Cast Carbon Steel (Flanged) Class-300	25 - 250 mm
<b>AV-279C</b>	Cast Carbon Steel (Flanged) Class-150	25 - 250 mm


**W**  
**S**  
**G**  
**O**  
**A**
**Stop Cum Non Return Valve Straight / Right Angle Pattern**

<b>AV-280A</b>	Cast Carbon Steel (Flanged) PN-40	25 - 150 mm
----------------	-----------------------------------	-------------


**W**  
**S**  
**G**  
**O**  
**A**
**Accessible Feed Check Valve**

<b>AV-282</b>	Cast Carbon Steel (Flanged)	25 - 80 mm
---------------	-----------------------------	------------


**Single / Double Post Hi-Lift / Full Lift Safety Valve - Flanged**

<b>AV-283</b>	Cast Carbon Steel (Single Post)	25 - 50 mm
<b>AV-284</b>	Cast Carbon Steel (Double Post)	25 - 50 mm
<b>AV-285</b>	Cast Carbon Steel (Full Lift)	25 x 40 - 100 x 50 mm


**W**  
**S**  
**G**  
**O**  
**A**

## Cast Steel Valves

### Gate Valve

<b>AV-288</b>	Cast Carbon Steel (Flanged) Class-150	15 - 600 mm
<b>AV-288A</b>	Cast Carbon Steel (Flanged) Class-300	25 - 300 mm
<b>AV-288B</b>	Cast Carbon Steel (Flanged) Class-600	40 - 200 mm
<b>AV-288C (Non IBR)</b>	CCS (Flanged) Class-150 (Suitable for Thermic Fluid)	15 - 600 mm


**W**  
**S**  
**G**  
**O**  
**A**

### Globe Valve

<b>AV-289</b>	Cast Carbon Steel (Flanged) Class-150	15 - 300 mm
<b>AV-289A</b>	Cast Carbon Steel (Flanged) Class-300	15 - 250 mm
<b>AV-289B</b>	Cast Carbon Steel (Flanged) Class-600	40 - 200 mm
<b>AV-289C (Non IBR)</b>	CCS (Flanged) Class-150 (Suitable for Thermic Fluid)	15 - 300 mm


**W**  
**S**  
**G**  
**O**  
**A**

### Swing Check Valve

<b>AV-290</b>	Cast Carbon Steel (Flanged) Class-150	40 - 600 mm
<b>AV-290A</b>	Cast Carbon Steel (Flanged) Class-300	40 - 200 mm
<b>AV-290B</b>	Cast Carbon Steel (Flanged) Class-600	40 - 200 mm
<b>AV-290C (Non IBR)</b>	CCS (Flanged) Class-150 (Suitable for Thermic Fluid)	40 - 600 mm


**W**  
**S**  
**G**  
**O**  
**A**

### Knife Edge Gate Valve

<b>AV-288K</b>	Cast Iron (Wafer) PN-10 / PN-16 (Also available in different material & pressure classes, with Electrical & Pneumatic Actuator)	50 - 600 mm
----------------	--	-------------

Suitable for : Slurry, Semisolid Fluid, Heavy Oils, Viscous Fluids



### Control Valve

<b>AV-289GC</b>	Cast Carbon Steel (Flanged) Class-150 (Also available with Electrical & Pneumatic Actuator)	25 - 300 mm
-----------------	--	-------------


**W**  
**S**  
**G**  
**O**  
**A**

## Forged Carbon Steel Valves

### Gate Valve - AV301 & AV302 / Globe Valve - AV303 & AV304

<b>AV-301</b>	Drop Forged Steel (Screwed) Class-800	15 - 50 mm
<b>AV-302</b>	Drop Forged Steel (Socket Welded) Class-800	15 - 50 mm
<b>AV-303</b>	Drop Forged Steel (Screwed) Class-800	15 - 50 mm
<b>AV-304</b>	Drop Forged Steel (Socket Welded) Class-800	15 - 50 mm


**W**  
**S**  
**G**  
**O**  
**A**

### Horizontal Lift Check Valve

<b>AV-305</b>	Drop Forged Steel (Screwed) Class-800	15 - 50 mm
<b>AV-306</b>	Drop Forged Steel (Socket Welded) Class-800	15 - 50 mm


**W**  
**S**  
**G**  
**O**  
**A**

### Needle Valve Regulating Type

<b>AV-311</b>	Drop Forged S.S. (Screwed) Class-800	15 mm
---------------	--------------------------------------	-------


**W**  
**S**  
**G**  
**O**  
**A**

### Investment Casting Stainless Steel (CF8) Butterfly Handle Ball Valve

**AV-504** S.S. (Screwed) PN-40 8 - 15 mm



W  
S  
G  
O  
A

### Investment Casting Stainless Steel (CF8) Ball Valve

**AV-505** S.S. (Screwed) PN-40 8 - 100 mm  
**AV-506** C.S.S. with Strainer (Screwed) PN-16 20 mm  
**AV-507** S.S. (Screwed) 15 - 100 mm  
**AV-510** S.S. (Flanged) Class-150



W  
S  
G  
O  
A

### Compact Pressure Reducing Valve (P.R.V)

**IC-132** S.S (Screwed) PN-16 15-50mm



W  
S  
G  
O  
A

### Test Drain Ball Valve

**IC-31** S.S (Screwed) 300 Psi 15-50mm



W  
S  
G  
O  
A

### Air Vent Valve

**IC-33** S.S (Screwed) PN-10 15-25mm



W  
S  
G  
O  
A

### Float Valve

**IC-39** S.S (Screwed) PN-10 15-25mm



W  
S  
G  
O  
A

### Concealed Ball Valve

**IC-100** S.S (Screwed) PN-25 15-50mm



W  
S  
G  
O  
A

### S.S. Landing (Fire Hydrant) Valve, Type - A

**IC-85** S.S (Flanged) Class-125 80mm



W  
S  
G  
O  
A

### Bends & Flanges - Cast Steel, Forged Carbon Steel

IBR Bends (45°, 90°, 180°) 1/2"-12"  
 IBR Flanges 1/2"-24"



**90° Elbow & Red. Elbow**
**AV-537** 8 - 100 mm

**AV-537A** 8 - 100 mm

**90° Tee & Red. Tee**
**AV-538** 8 - 100 mm

**AV-538A** 8 - 100 mm

**Street Elbow**
**AV-534** 8 - 100 mm

**Cross**
**AV-531** 8 - 100 mm

**Union**
**AV-540** 8 - 100 mm

**Round Cap**
**AV-529** 8 - 100 mm

**Square Plug / Dummy**
**AV-544** 8 - 100 mm

**Hex Nut**
**AV-532** 8 - 100 mm

**Hex Head Plug**
**AV-546** 8 - 100 mm

**Reducing Hex Bushing**
**AV-543** 10x8 - 100x25 mm

**Reducing Socket**
**AV-533** 10x8 - 50x25 mm

**Hex Nipple**
**AV-541** 8 - 100 mm

**Socket**
**AV-539** 8 - 100 mm

**Reducing Hex Nipple**
**AV-535** 10x8 - 100x25 mm

**Hose Nipple**
**AV-542** 8 - 100 mm

**Coupling**
**AV-547** 8 - 100 mm

**Hex Cap**
**AV-530** 8 - 100 mm

**Elbow Union**
**AV-536** 10 - 50 mm

**Elbow 45°**
**AV-545** 8 - 100 mm




Valves, Fittings & Boiler Mountings



Ball Valves

Scan to view PDF Version



**Atam Valves Limited**  
1051, Outside Industrial Area,  
Jalandhar - 144004 Punjab. INDIA

---

Phone : +91 181 5001111 Mobile : +91 98159 84311  
Email : sales@atamfebi.com | exports@atamfebi.com  
[www.atamvalves.in](http://www.atamvalves.in)